

HMS PLAYGROUND COMMITTEE MEETING

June 10, 2010



INTRODUCTIONS

- Name
- Role in the school community...
- Why are you here?

WEB SITE/WIKI

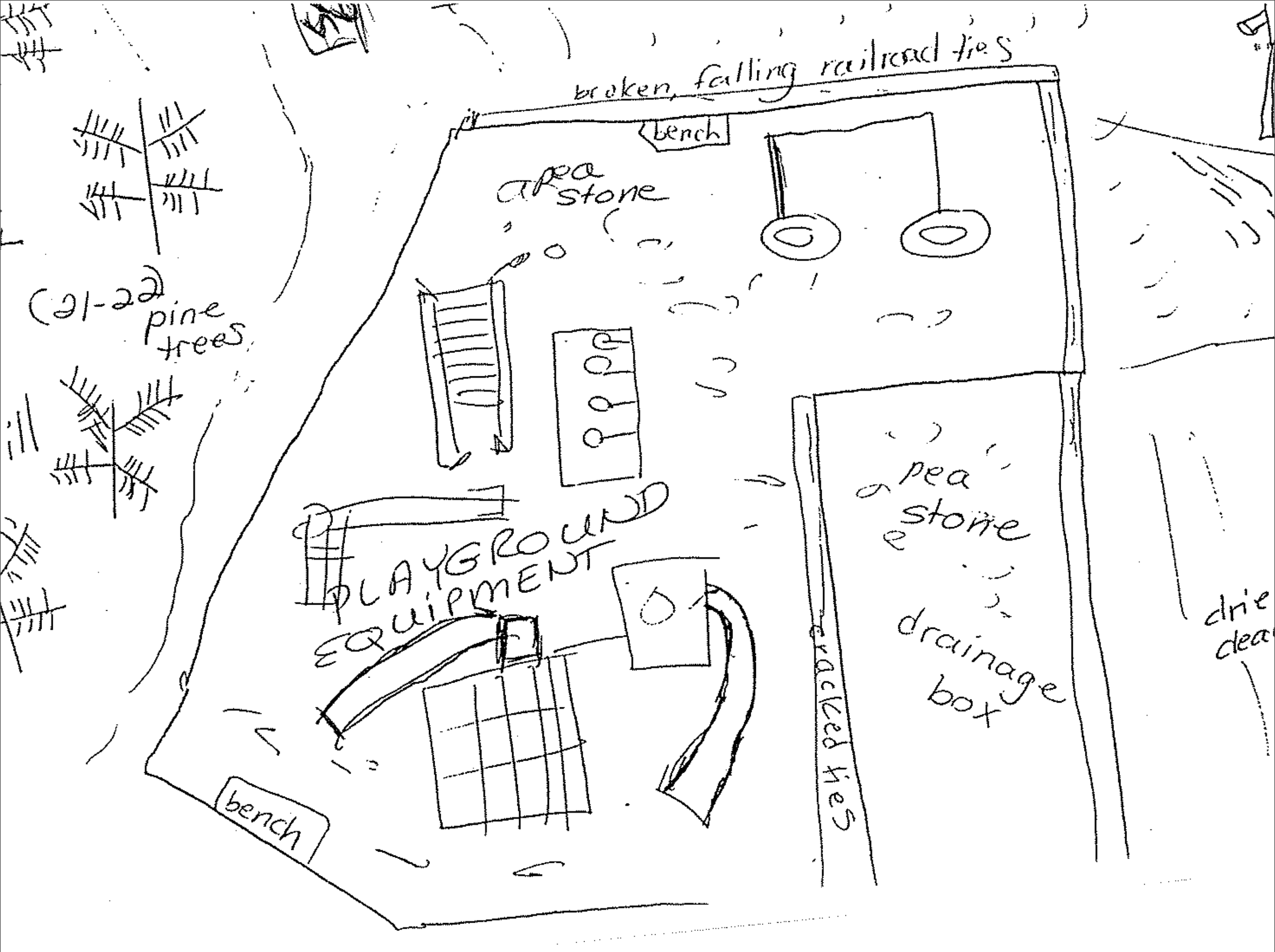
- <http://hmsplayground.wikispaces.com/>

INFO ON NEW OPPORTUNITY

- Anonymous donor
- Beginning at around \$50K
- Important to have an HMS appropriate playground

HISTORY OF CHANGES LAST 10 YEARS

- Tree Removal-Spring of 2004
- New swings-Summer of 2004
- Maple Street Playground installed Summer 2004-*Landscape Structures*
- Storage Shed and Display Case-April 2005
- Picnic Tables made by the Girl Scouts-Spring 2007
- Sand Box 2008
- Proposed HMS/HYSA Baseball Field 2010



broken, falling railroad ties

bench

pea stone

21-22 pine trees

PLAYGROUND EQUIPMENT

bench

pea stone

drainage box

cracked ties

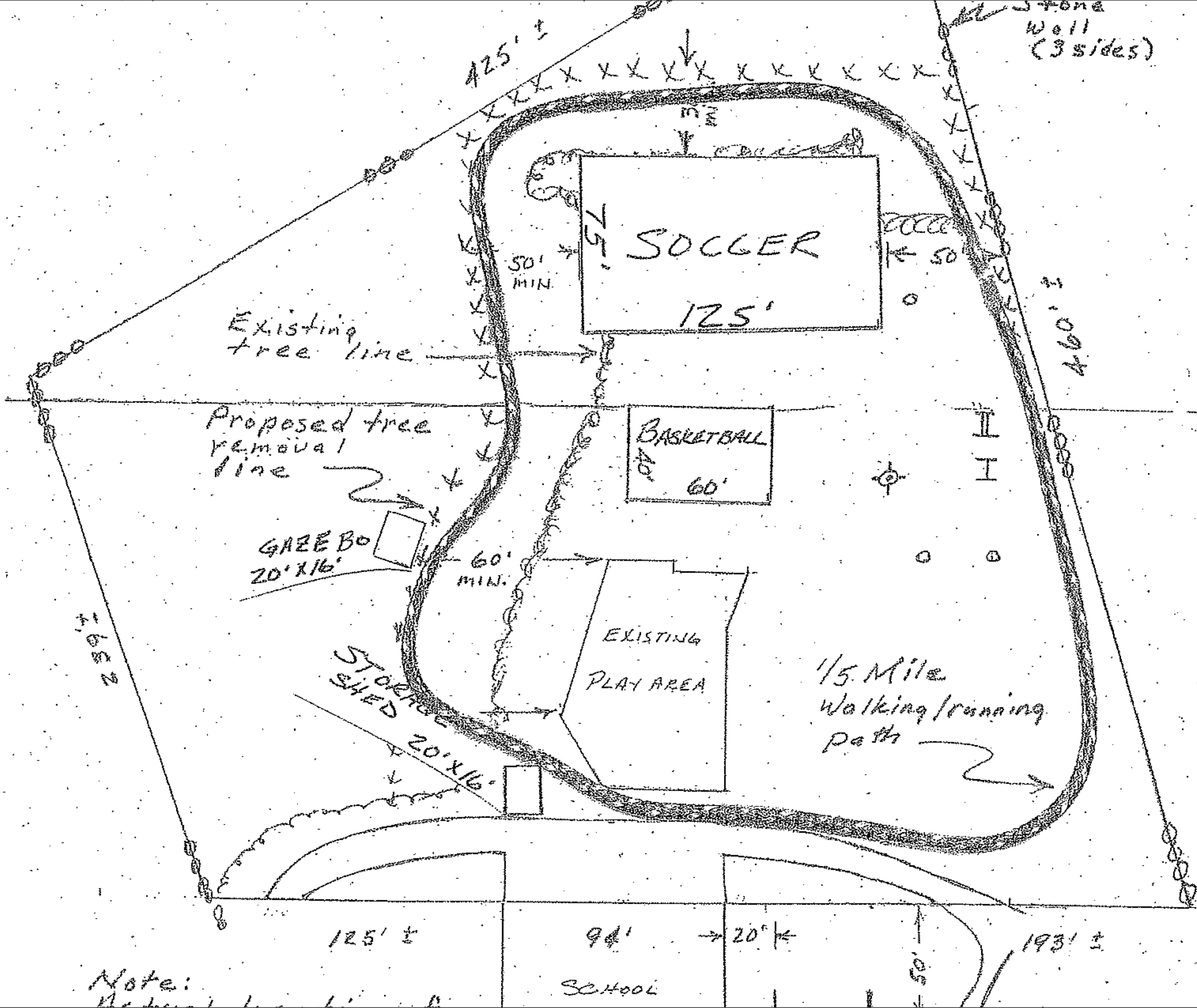
drie clean

BRAINSTORMING POSSIBILITIES

- New structure
- Fencing-perhaps separate from the parking lot?
- Basketball / multi-court
- Walking Trail
- Shade
- Preschool: bucket swing, bicycles, path

- Gazebo; environmental classes, performances, shade, relaxation
- Kicking wall
- New surface
- Targets for throwing balls

- Think about how many features there are out there.
- Do we expand the footprint or add to it?
- ADA compliant
- Prison built?
- Think about some things that can be volunteer built
- Phases-fund it in stages. Perhaps start with structure.
- Do we keep some and then make additions?
- Issue of footprint.
- Perhaps tie into obesity issue.



Stone
Wall
(3 sides)

II
I

Note:

SCHOOL

CHAIR?

- Donors believe that an HMS parent would make a good chair

POTENTIAL COMMITTEE PROCESS

- Determine Committee members and Chair
- Determine reasonable timeline
- Develop a finance subcomm.
- Visit other playgrounds, continue brainstorming ideas
- Obtain quotes
- Arrive at decision on what to install
- Secure contractors / volunteers
- Install
- Celebrate

TIMELINE?

- Two month lead time for installation.
- Be looking at “stuff” online.
- Homework:



